



Modern Furniture
MADE SIMPLE



SPRING 2012 COLLECTION

MODERN FURNITURE
MADE ECO-FRIENDLY
MADE MULTI-FUNCTIONAL
MADE ORIGINAL
MADE TO LAST
MADE FOR MODERN LIFE
MADE SIMPLE

WE MANUFACTURE OUR UPHOLSTERED SEATING WITH 100% FSC-CERTIFIED WOOD PRODUCTS. FSC CERTIFICATION ENSURES THAT WOOD COMES FROM WELL-MANAGED FORESTS WHICH EMPLOY METHODS OF RESPONSIBLE HARVESTING AND MEET STRICT ENVIRONMENTAL STANDARDS. FOR MORE INFORMATION ABOUT THE FOREST STEWARDSHIP COUNCIL AND ITS PRACTICES, VISIT FSC.ORG



02-27
**SOFAS,
SECTIONALS
& CHAIRS**



36-41
DINING



28-29
STORAGE



42-43
LIGHTING



30-33
ACCENTS



44-45
ACCESSORIES



34-35
OTTOMANS



02 ATWOOD



ATWOOD SECTIONAL NEW
W92"xD65"xH27" | SEAT 17"



ATWOOD CHAIR NEW
W35"xD34"xH27" | SEAT 17"



ATWOOD SOFA NEW
W82"xD34"xH27" | SEAT 17"





06 JANE



JANE BI-SECTIONAL
W103"xD72"xH30" | SEAT H17"



JANE LOFT BI-SECTIONAL
W82"xD65"xH30" | SEAT H17"



JANE CHAIR
W35"xD35"xH30" | SEAT H17"



JANE LOVESEAT
W63"xD35"xH30" | SEAT H17"



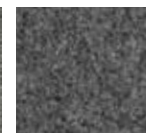
JANE SOFA
W82"xD35"xH30" | SEAT H17"



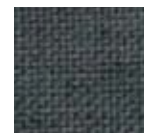
COBOURG
SOAPSTONE



TOTEM STORM



BILLIARDS FLINT



URBAN TWEED
INK



LATO ASH

JANE LOFT BI-SECTIONAL IS
NOT AVAILABLE IN LATO ASH



06 JANE



JANE BI-SECTIONAL
W103"xD72"xH30" | SEAT H17"



JANE LOFT BI-SECTIONAL
W82"xD65"xH30" | SEAT H17"



JANE CHAIR
W35"xD35"xH30" | SEAT H17"



JANE LOVESEAT
W63"xD35"xH30" | SEAT H17"



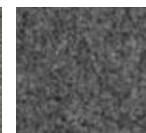
JANE SOFA
W82"xD35"xH30" | SEAT H17"



COBOURG
SOAPSTONE



TOTEM STORM



BILLIARDS FLINT



URBAN TWEED
INK



LATO ASH

JANE LOFT BI-SECTIONAL IS
NOT AVAILABLE IN LATO ASH



08 RICHMOND



RICHMOND BI-SECTIONAL
W104"xD72"xH34" | SEAT H17"



RICHMOND CHAIR
W36"xD35"xH34" | SEAT H17"



RICHMOND SOFA
W86"xD35"xH34" | SEAT H17"



LATTICE GRANITE LINEN LATTE CASHMERE CARBON



SPENCER LOFT BI-SECTIONAL
W84"xD75"xH31" | SEAT H17"



SPENCER CHAIR
W37"xD34"xH31" | SEAT H17"



SPENCER SOFA
W84"xD34"xH31" | SEAT H17"



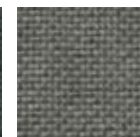
FLANNELSUEDE
FAWN



TOTEM PEBBLE



URBAN TWEED INK



TOTEM STORM

10 SPENCER



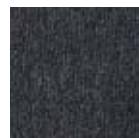
12 CARMICHAEL



CARMICHAEL LOFT SOFA **NEW**
W72"xD33"xH35" | SEAT 17"



CARMICHAEL CHAIR
W30"xD33"xH35" | SEAT H17"



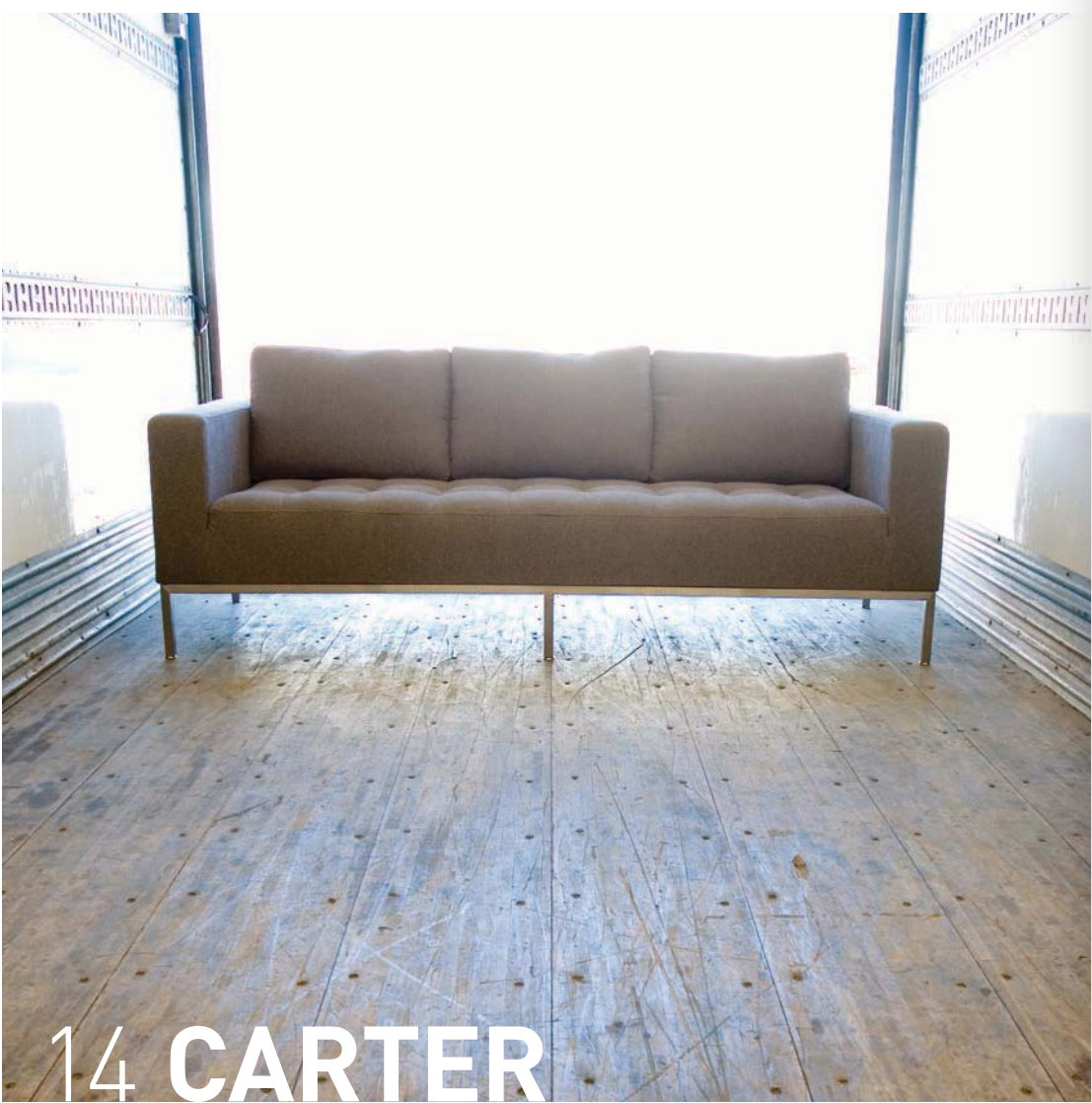
COBOURG
OSTRICH



URBAN TWEED
POTASH



TOTEM STORM



14 CARTER



CARTER SECTIONAL
W110"xD68"xH31" | SEAT H17"



CARTER CHAIR
W35"xD35"xH31" | SEAT H17"



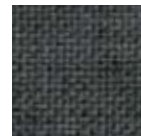
CARTER SOFA
W82"xD35"xH31" | SEAT H17"



COBOURG
SOAPSTONE



TOTEM STORM



URBAN TWEED INK



URBAN TWEED
POTASH



16 ROCHELLE



ROCHELLE SOFA
W83"xD33"xH29.5" | SEAT H18"



ROCHELLE CHAIR NEW
W35"xD33"xH29.5" | SEAT H18"



URBAN TWEED
Gوسفورد



URBAN TWEED
POTASH



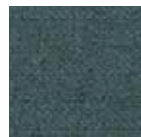
URBAN TWEED
TRUFFLE



18 JAMES



JAMES LOUNGE
W76"xD36"xH30" | SEAT H17"



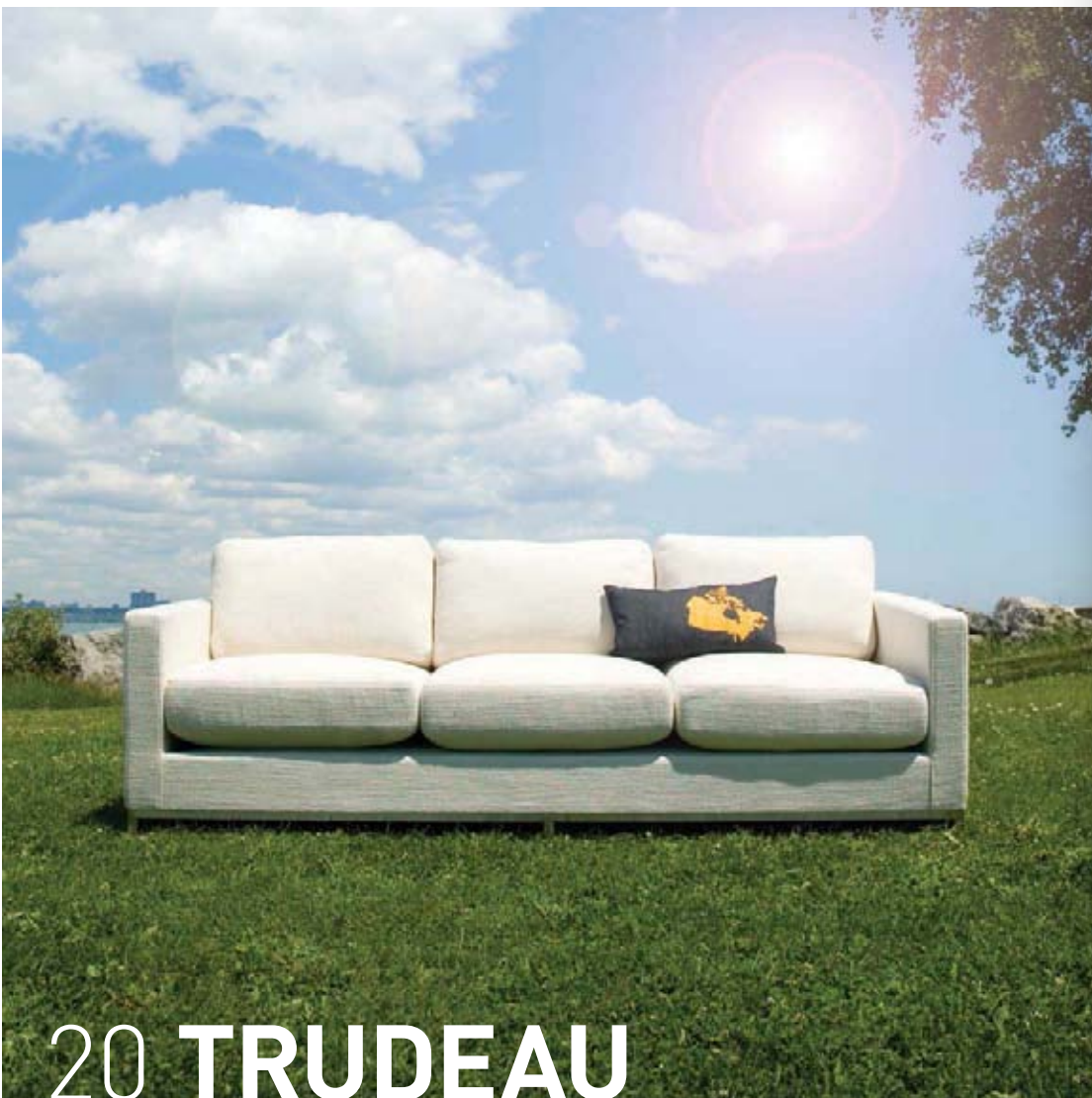
MENSWEAR
GRIFFIN



VINYL COAL



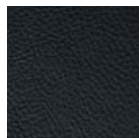
VINYL SNOW



TRUDEAU SOFA
W81"xD35"xH31" | SEAT H17"



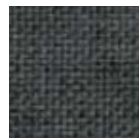
TRUDEAU CHAIR
W32"xD35"xH31" | SEAT H17"



BLACK LEATHER



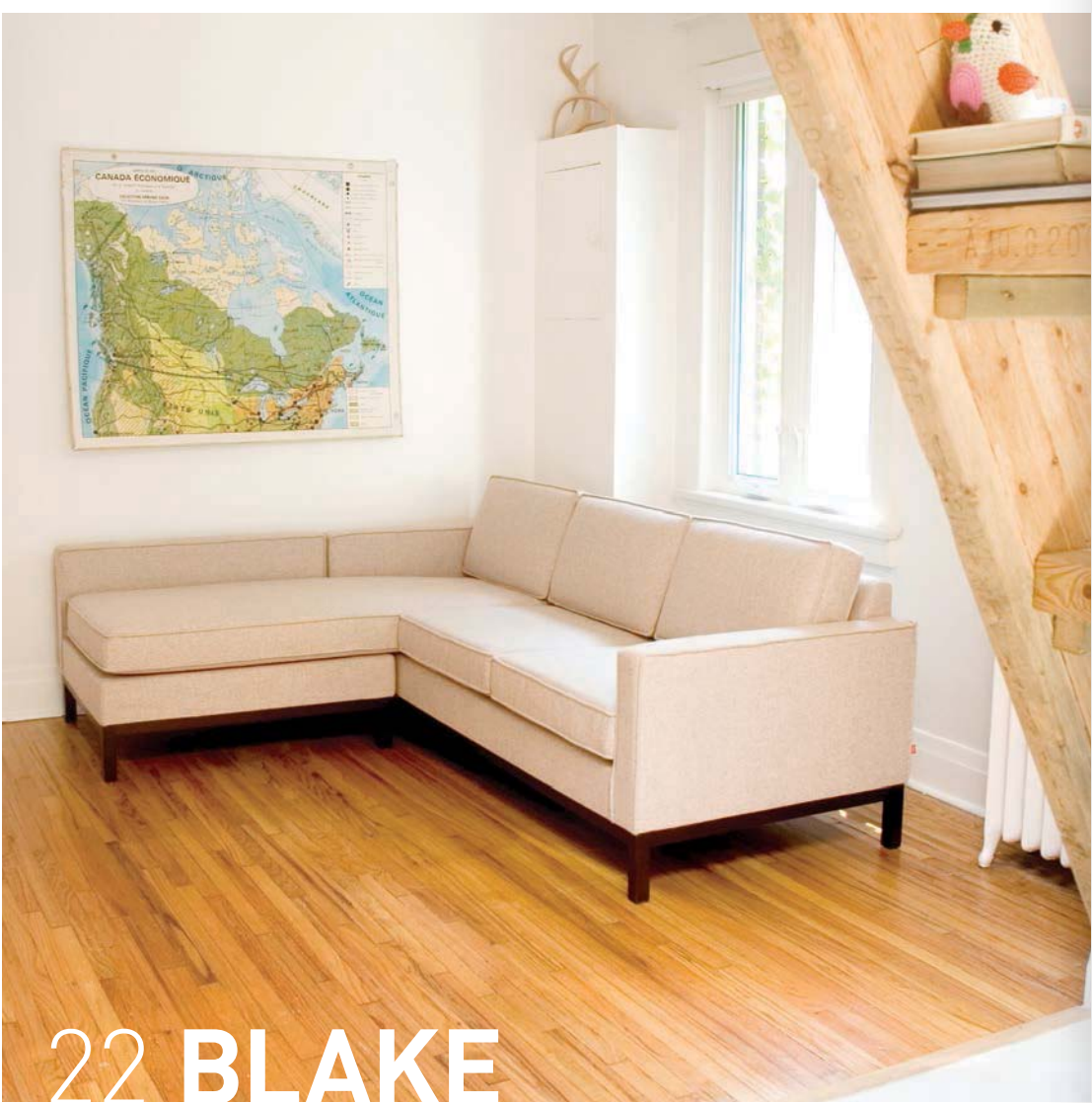
CABANA HUSK



URBAN TWEED INK



URBAN TWEED
POTASH



22 BLAKE



BLAKE LOFT BI-SECTIONAL
W84"xD68"xH31" | SEAT 17"



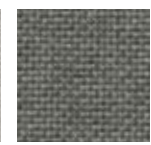
BLAKE LOFT CHAIR
W31"xD32"xH31" | SEAT H17"



BLAKE LOFT SOFA
W76"xD32"xH31" | SEAT H17"



CASHMERE DOVE



TOTEM STORM



URBAN TWEED INK

BASE OPTIONS



NATURAL



WENGE



BALDWIN MIST



MICROSUEDE
LAMB



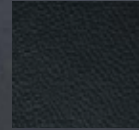
CASHMERE
CARBON

SPARROW GLIDER
W26"xD34"xH37" | SEAT H17"

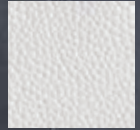
SPARROW OTTOMAN
W21"xD20"xH17"



24 SPARROW



BLACK
LEATHER



WHITE
LEATHER



BILLIARDS
NICKEL

DELANO CHAIR
W28"xD30"xH25" | SEAT H16"



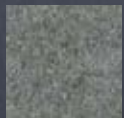
DELANO 25

GT ROCKER

W26"xD39"xH32" | SEAT H16"



BILLIARDS
CLEMENTINE



BILLIARDS
NICKEL



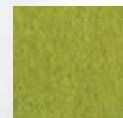
MID-CENTURY
BRULÉE



26 GT ROCKER

TRUSS CHAIR

W26.5"xD31"xH30" | SEAT H17"



BILLIARDS
VERT



MID-CENTURY
BRULÉE



TRUSS 27



28 STORAGE



ANNEX CREDENZA
W72"xD18"xH24"



ANNEX CABINET
W60"xD18"xH30"



ANNEX MEDIA STAND
W60"xD18"xH24"



WALNUT



30 ACCENTS



STAINLESS CUBE
W18"xD18"xH18"



TIMBER TABLE
W12"xD12"xH18"

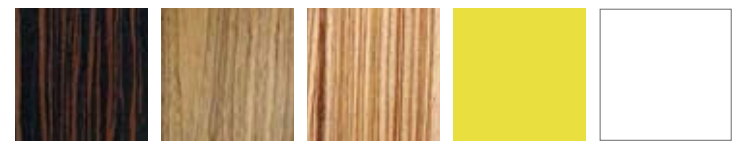


ACRYLIC I-BEAM TABLE
W12"xD12"xH18"



PAWN STOOL
W14"xD14"xH18"

PAWN STOOL



MACASSAR EBONY WALNUT ZEBRANO SAFFRON WHITE



DRAKE COFFEE TABLE
W30"xD30"xH15"



PRAIRIE TABLES NEW
W48"xD29"xH12-14"



STANLEY CONSOLE TABLE
W36"xD10"xH31.5"

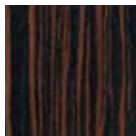


BISHOP TABLE
W18"xD12"xH22"



RETURN BENCH
W60"xD16"xH18" | SEAT H15"

DRAKE, BISHOP
& RETURN



MACASSAR
EBONY



WALNUT



ZEBRANO



WHITE



WHITE



ASH/STAINLESS



OSSINGTON COFFEE TABLE
W48"xD20"xH15"



OSSINGTON END TABLE
W20"xD20"xH18"



STUMP COFFEE TABLE NEW
W48"xD19"xH14"



STUMP STORAGE BOX NEW
W15"xD15"xH18"

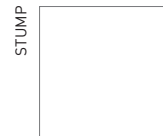
OSSINGTON



WALNUT/BLACK

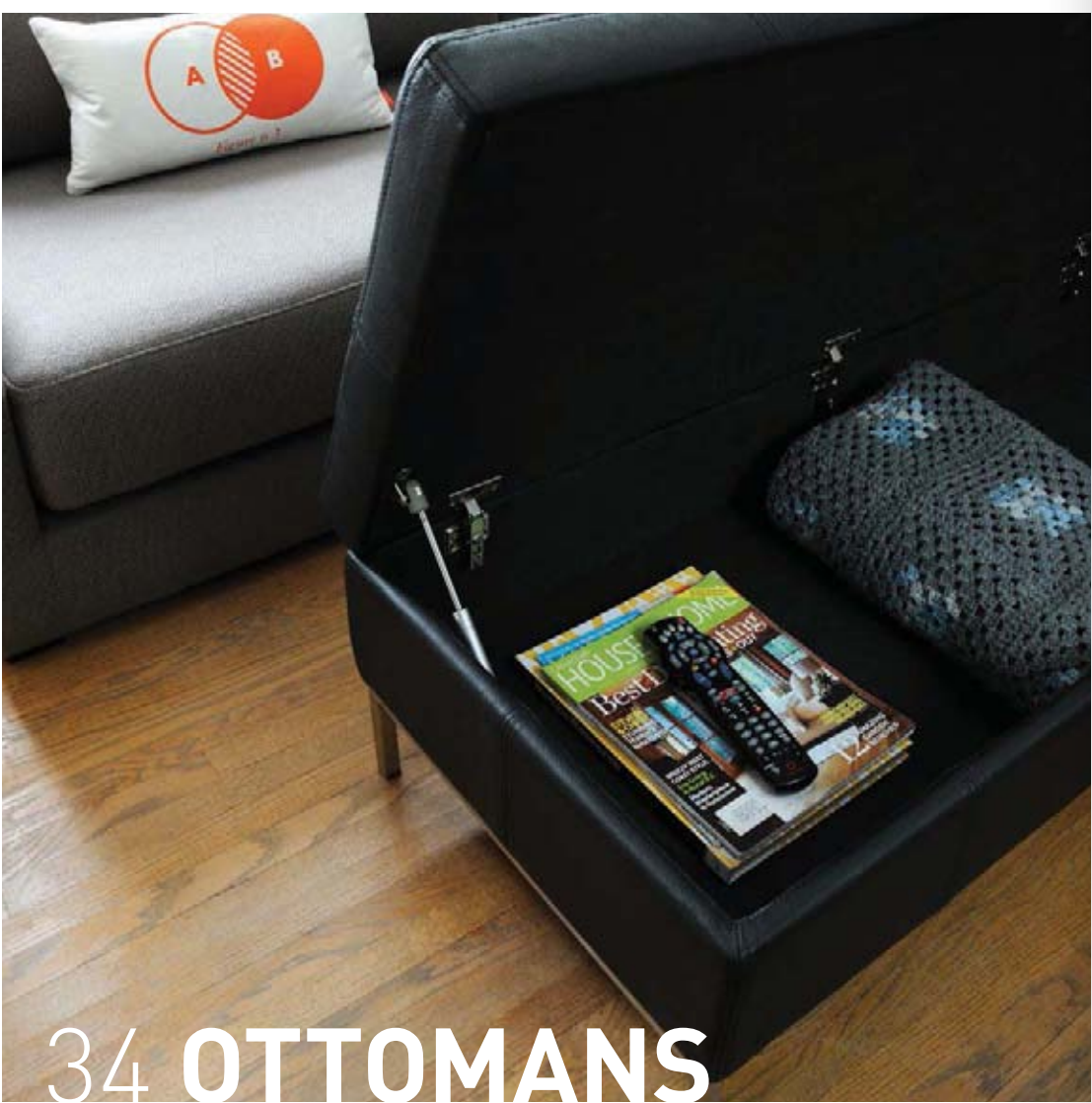


WALNUT/STAINLESS



WHITE

STUMP



34 OTTOMANS



JASPER CUBE
W18"xD18"xH16.5"



HENRY OTTOMAN
W50"xD21"xH15"

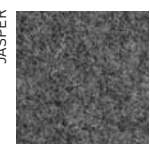


HENRY STORAGE OTTOMAN **NEW**
W50"xD21"xH15"

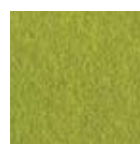


UPCYCLE OTTOMAN
W18"xD18"xH15"

JASPER



BILLIARDS
FLINT

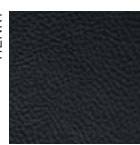


BILLIARDS
VERT



BILLIARDS
CLEMENTINE

HENRY



BLACK LEATHER



WHITE LEATHER



36 DINING



SCHOOL STOOL
W19"xD19"xH32" | SEAT H24"



SCHOOL CHAIR
W17"xD20"xH31" | SEAT H17.5"

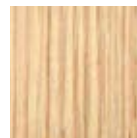


NIAGARA COUNTER TABLE NEW
RECTANGLE: W30"xD60"xH36"
SQUARE: W33"xD33"xH36"

NIAGARA & SCHOOL



WALNUT



NATURAL OAK



STANLEY STOOL
W17"xD13"xH24" | SEAT H24"



THOMPSON CHAIR
W19"xD20"xH31" | SEAT H17.5"

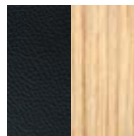
THOMPSON



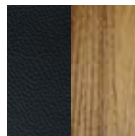
WHITE/
NATURAL OAK



WHITE/
WALNUT



BLACK/
NATURAL OAK



BLACK/
WALNUT

STANLEY



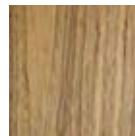
ASH/STAINLESS



SPAN DINING TABLE
W72"xD36"xH30"



NATURAL OAK



WALNUT



GRAPH CHAIR
W18"xD18"xH30" | SEAT H17.5"

GRAPH STOOL
W17"xD17"xH33" | SEAT H24"

GRAPH



VINYL COAL/
STAINLESS



VINYL SNOW/
STAINLESS

CHURCH CHAIR
W19"xD20"xH31" | SEAT H17.5"

CHURCH STOOL W17"xD19"xH32" |
SEAT H24"



CHURCH



NATURAL OAK/
SLATE



NATURAL OAK/
WHITE



WALNUT/
SLATE



WALNUT/
WHITE

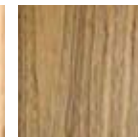


CHUNK DINING TABLE
W72"xD34"xH30"

CHUNK BENCH
W59"xD14"xH18"



NATURAL OAK



WALNUT

PLANK DINING TABLE
W72"xD36"xH30"

PLANK BENCH
W59"xD14"xH18"



WALNUT



42 LIGHTING



LIGHTBOX
W18"xD18"xH18"



WHITE ACRYLIC HANGING LAMP
W36"xD7"xH11"



FROSTED ACRYLIC HANGING LAMP
W36"xD7"xH7"



LIGHTSTICK
W3"xD3"xH72"
←



VINTAGE SWING ARM LAMP
L50"xH10"



44 ACCESSORIES



FRUIT TROUGH
W30"xD3"xH2"



ACRYLIC WINE RACK
W3"xD4"xH32"



MAGAZINE RACK
W13"xD3.5"xH58"



GRAPHIC PILLOWS
20"x20" AND 20"x10"



PICTURE RAIL
W36" & 60" | D4"xH3"

GUSMODERN.COM
FACEBOOK.COM/GUSMODERN



GUS* DESIGN GROUP
223 EVANS AVENUE
TORONTO, CANADA
M8Z 1J5



Mixed Sources

Product group from well-managed
forests, controlled sources and
recycled wood or fiber

Cert no. SW-COC-1383

www.fsc.org

© 1996 Forest Stewardship Council